

Balterra Gold Project

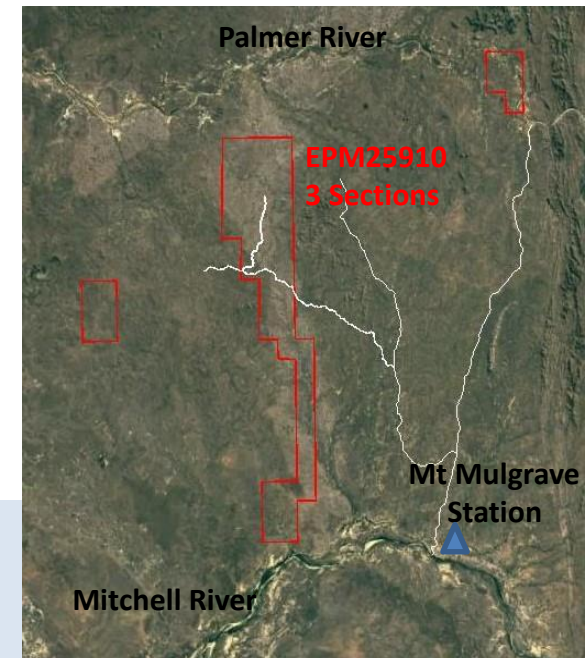
North Queensland, Australia

**Investment Opportunity
Advanced Gold Exploration**

Overview

Location:	<ul style="list-style-type: none">• 225 km NW of Cairns, Queensland, Australia
Title:	<ul style="list-style-type: none">• EPM covering 170 km²• Granted tenure over area tightly held for c. 20 years
What:	<ul style="list-style-type: none">• Four defined gold bearing ferruginous quartz vein systems in alteration halos• Five gold +/- base metals prospects from advanced exploration to greenfields
Exploration Completed:	<ul style="list-style-type: none">• Mapping and government regional magnetics• Regional stream sediment geochemistry• Rock chip sampling across all defined vein systems• Soil program across Fox Creek system• 12 RC drillholes into Balterra Prospect
Mineralisation:	<ul style="list-style-type: none">• Balterra Reef - 400m x 2m, rock chips to 292 g/t Au, costeans to 7.4 g/t over 1m• Fox Ck - >5.5km long, 500m wide, rock chips to 119 g/t Au.• Rosser Ck 500m long, 2m wide, rock chip assays average 7.95 g/t• Rocky Ck 300m long, 2m wide with rock chip assays average 4.04 g/t• Major portion of EPM with streams anomalous for precious and base metals
Proposed Exploration:	<ul style="list-style-type: none">• Compile all historic data and verify with field mapping and sampling• Follow up costeaning and rock chip sampling• Drilling of priority targets, resource estimation and scoping studies.
Reserve Development:	<ul style="list-style-type: none">• Balterra Reef - Fox Creek - Rosser Creek - Rocky Creek - Extract Gold in soil and alluvium via dry blower – est. 10,000 ounces p.a.• Fort Know Style operation, extracting – est. 100,000 ounces p.a.• Upside base metals secondary product

Location Map

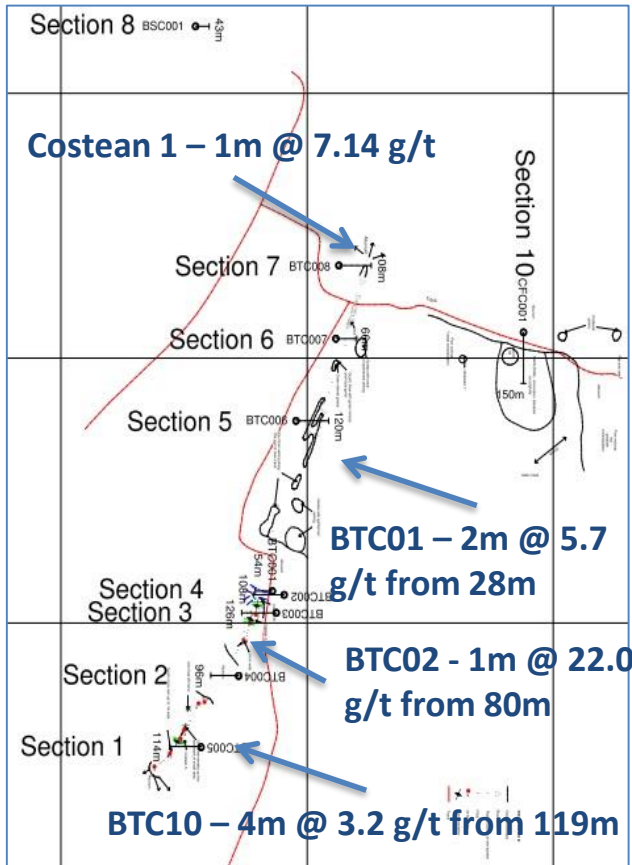


Balterra Gold Project

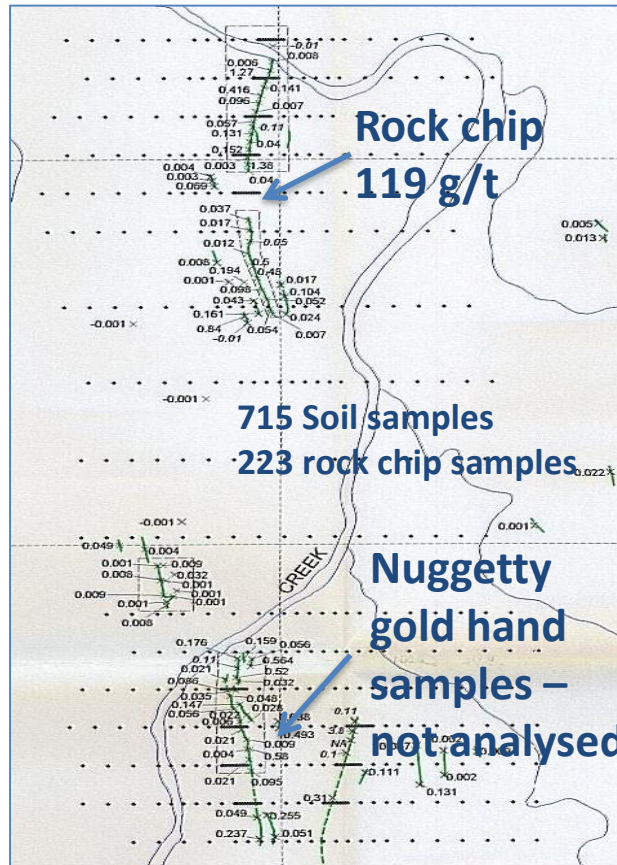
North Queensland, Australia

Balterra Resources Pty Ltd has exploration tenure over approximately 170 km² of highly anomalous gold occurrences. The company is targeting high grade epithermal, mesothermal, Fort Knox and porphyry style gold systems. Geologically, the area hosts a number of defined large quartz-limonite reefs within sheared granitic and metamorphic rocks of the Yambo Inlier. All reefs have previously reported high-grades of gold in both rock chip and soil analyses.

Balterra Reef



Fox Creek



Contact:

Balterra Resources Pty Ltd

Warwick Smyth

T +61 7 3851 7400

E wdsmyth@geoconsult.com.au

Justin Haines

T +61 418 876 420

E Justin@Haines.net.au